

ADDRESSABLE MONITOR/INPUT MODULE

MODEL: AS-801-MM

Description

ASES **Monitor/Input Module** is used to receive normally open or normally closed control signals from interfaced equipment and transmit the messages back to the fire alarm control panel. The units are ideal for use in water flow indicators Beam Detectors, pressure switches monitoring, position switches, signal valves and external interface devices and many more.

- When these devices operate, the output signal can be transmitted to fire alarm control panel via module through the fire alarm loop to generate alarm, and activate other relevant devices.
- Electronic addressing can be done through DIP Switches.

Features

- Monitors-switch contacts of remote equipment.
- Input Signal normally open (NO).
- Loop powered.
- Electronically addressed through DIP Switches.
- LED status indicator.
- First fix base for easy and safe installation.
- Built-in MCU processes messages intelligently.
- Plug-in structure. Electronic address can be modified in the field.
- Removable PCB for, easy to maintain.
- LED colour Green blink for normal case & In Fire case view. the LED in solid RED.

Recommended Cabling

1.5² mm2 or above fire retardent cable is recommended, laid through metal or flame- retardant conduit, but subject to local codes. Note: Different colour cables are used to avoid wiring mistakes.



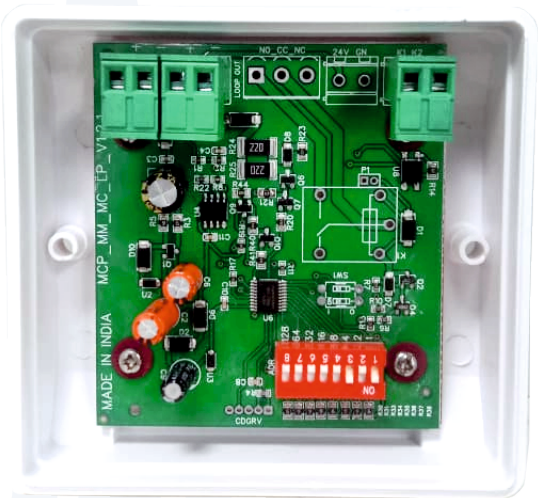
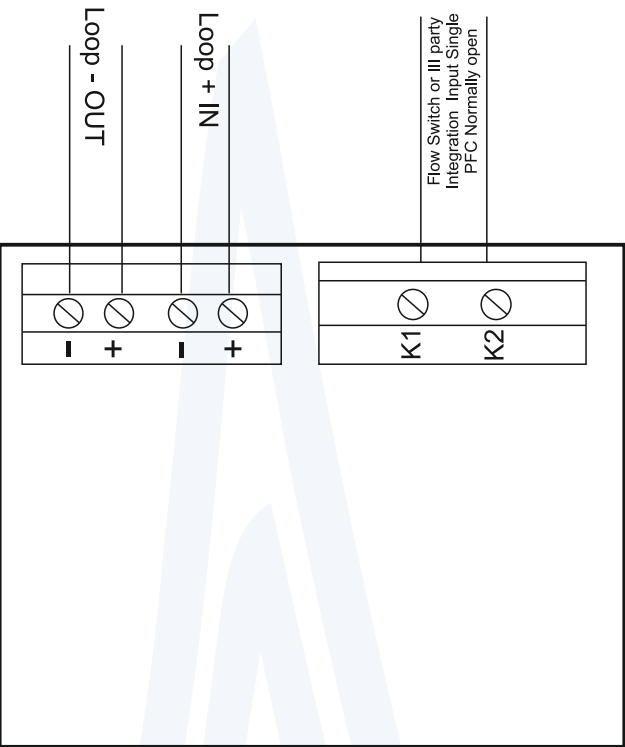
Approvals:



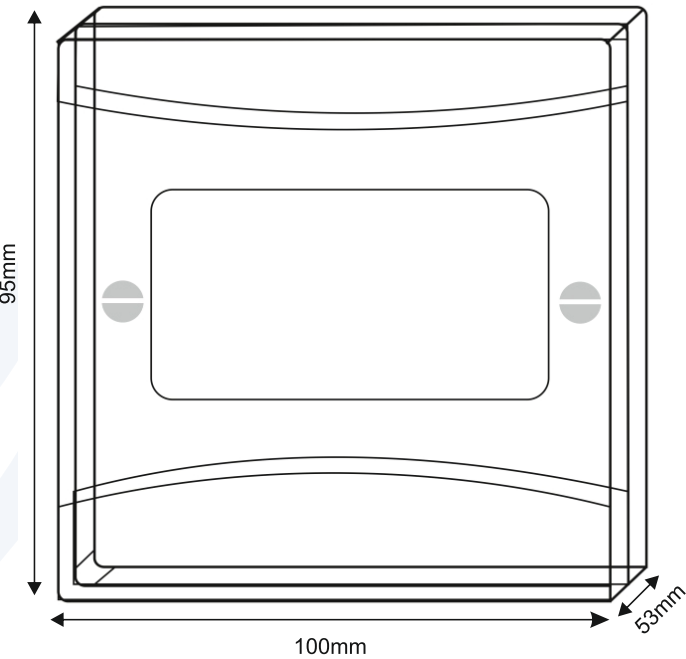
Technical Specification

Operating Loop Voltage	22 -24 Vdc
Standby Current	2.2 mA
Alarm Current	3.5 mA.
Programming Method	Electronically addressed
Initiating Mode	Green, flashes every 3s normally; RED steadily illuminates after alarming.
Storage Temperature	-10°C to +70°C
Operating Temperature	-10°C to +60°C
Relative Humidity	5%-95% Rh.
Material of Enclosure	ABS
Dimension (W×H×D)	95 x 100 x 53 MM
Weight	150 g. approx.

Control Module image for wiring:



Machanical Description:



Limited Warranty:

ASES warrants that the product will be free of charge for repairing or replacing from defects in design, materials and workmanship during the warranty period. This warranty does not cover any product that is found to have been improperly installed or used in any way not in accordance with the instructions supplied with the product. Anybody, including the agents, distributors or employees, is not in the position to amend the contents of this warranty. Please contact your local distributor for products not covered by this warranty.